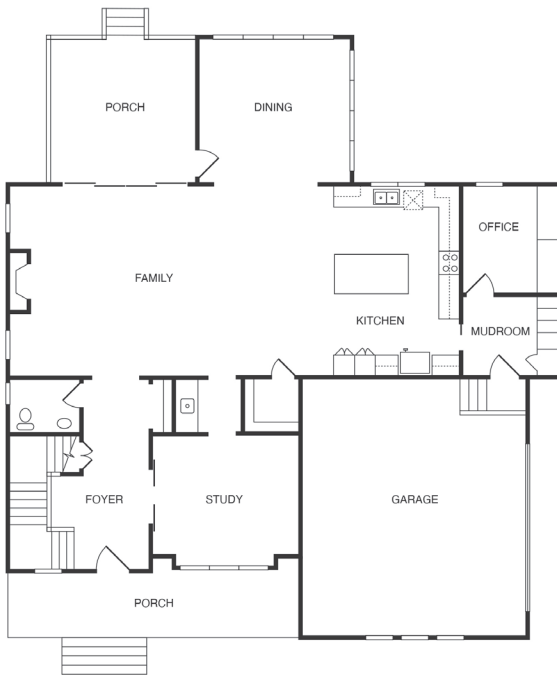


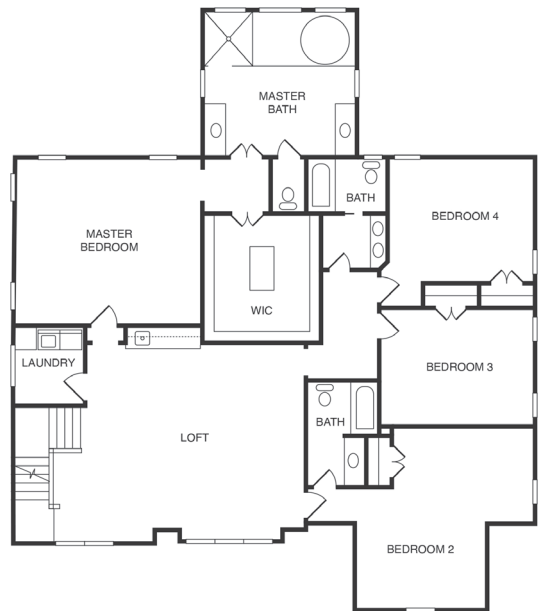
#7 | The EDGEWOOD | KLM Building Corporation



This information is deemed reliable but is not guaranteed. All details, dimensions, square footage and illustrations are approximate and may vary from actual plans & specifications.



FIRST FLOOR



SECOND FLOOR

UNIQUE FEATURES:

- Interior brick accent wall in kitchen & family room
 - Dining nook with built-in side board & wine/beverage cooler
 - Japanese soaking tub & curbless shower in master bath
 - 2nd floor loft with built-in bar with sink & beverage center
- 4 Beds / 3.5 Baths / 4023 sf / 2-car garage



Builder Information:

KLM Building Corp.
KLMBuildingCorporation.com
804.543.1422

Sales Information:

Sarah Kellam
Metropolitan Real Estate
804.400.5484